

SW150 Lens Adaptor Assembly Instructions

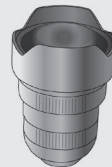
Stage 1

The Lens Adaptor is made up of three rings:

1. Front Ring (small lugs)
2. Compression Ring (red)
3. Locking Ring

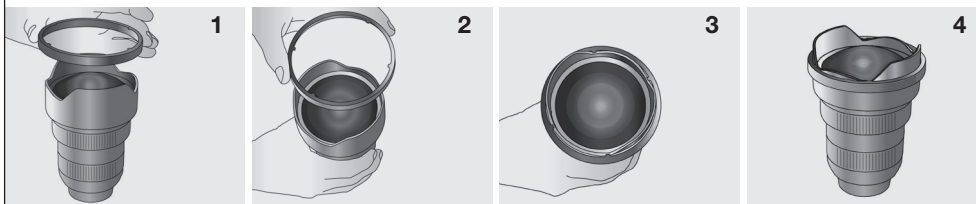
All three rings are supplied screwed together, unscrew from each other before assembly.

To fix the Lens Adaptor, the lens must be off the camera.



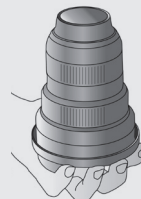
Stage 2

Place the front ring over the lens shade, with the small lugs furthest from the lens body. The ring should locate into the correct position.



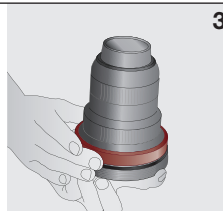
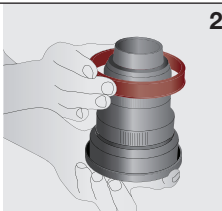
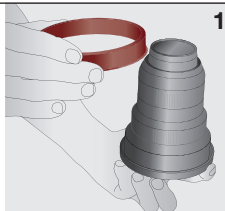
Stage 3

Invert the lens, keeping the front ring in place with your fingertips.



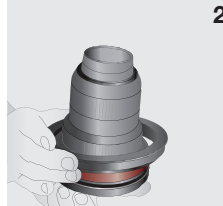
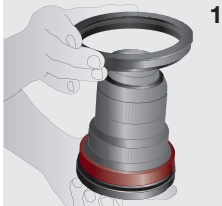
Stage 4

Introduce the red compression ring from the rear of the lens.



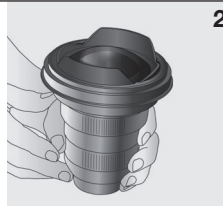
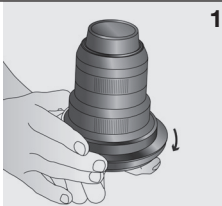
Stage 5

Place the locking ring, from the lens rear again, into position over the red compression ring. Ensure the flange is facing upwards, toward the rear of the lens.



Stage 6

Screw the locking ring into the front ring in a clockwise rotation until tight. The collar is now fixed in place.



Stage 7

The SW150 Filter Holder slips easily over the lens adaptor. Tighten the locking screw to fix the holder firmly in place on the adaptor. The holder will still rotate.

