

## **Linhof 3D Levelling Head II with new clamps for panorama rotation**

The Linhof 3D Levelling Head II was developed as a head which allows tilts of more than 180° even with heavier cameras.

The clamps at both panoramic plates were completely revised: Three grip clamping bracket provide a better clamping force and easier opening.

The Levelling Head II is available in two versions: The 3D Levelling Head II (code 003665) is delivered with Quickfix adapter I incl. adapter plate; a 35 mm plate can be ordered optionally with code 003878.

Linhof 3D Levelling Head II with dovetail-track (code 003666) which gives the possibility to use quick-change plates from Arca, Novoflex a.s.o.



003665

## **Linhof 3D Levelling Head II with integrated Quickfix I adapter**

Code 003665

Tripod mounting thread 3/8"

Levelling and tilt range from -15° to + 90°

Dimensions 105x105x110 mm

Weight 1105 g

Weight Quickfix I plate 64 g.

## **Linhof 3D Levelling Head II with dovetail-track**

Code 003666

Tripod mounting thread 3/8"

Levelling and tilt range from -15° to + 90°

Dimensions 105x105x100 mm

Weight 980 g



003666

## **Linhof 3D Micro Levelling Head with new clamps for panorama rotation**

The Linhof 3D Micro is already successfully introduced in the market as an levelling head, guaranteeing extremely precise camera adjustments. Now the 3D Micro is improved again. The clamps at both panoramic plates were completely revised: Three grip clamping bracket provide a better clamping force and easier opening.

The Linhof 3D Micro comes in two versions: The 3D Micro, code 003660, is equipped with the Linhof Quickfix I permitting a "cliclac" attachment to the camera.

The 3D Micro, code 003662, is available with a dovetail-track to accept the quick-change plates from Arca, Novoflex a.s.o.



003660

### **Linhof 3D Micro Levelling Head with integrated Quickfix I adapter**

Code 003660

Dimensions 115x115x103 mm

Weight 1125 g

### **Linhof 3D Micro Levelling Head with dovetail-track**

Code 003662

Dimensions 115x115x93 mm

Weight 1000 g



003662

## **Linhof angled device for 3D Micro – now also available with dovetail-track**

Also new is the Linhof angled device with dovetail-track (003661-D), which expands the possibilities for the use of 3D Micro in vertical positioning of the camera.

Both angled devices – with Quickfix adapter and dovetail – have also been equipped with the improved clamps for panorama rotation.

### **Angled device for 3D Micro with Quickfix I adapter**

Code 003661-QF

Dimensions 90x90x130 mm

Weight 505 g

### **Angled device for 3D Micro with dovetail-track**

Code 003661-D

Dimensions 90x90x120 mm

Weight 380 g



003661-QF

## **Linhof panorama plate with new clamps for panorama rotation as an accessory for Linhof ballheads**

Linhof offers panorama plates as an accessory for the Linhof ballheads Profi II and III. These plates can be mounted instead of the existing top plate supplied with the Linhof ballheads. The clamps at the panoramic plate was completely revised: Three grip clamping bracket provide a better clamping force and easier opening.

The panorama plate exists in two versions: Code No. 003673 with Linhof Quickfix I adapter allowing fast adaptation of the camera. Code No. 003674 with dovetail-track allows the use of quick-change plates from Arca, Novoflex a.s.o.

The mounting is easily made with an integrated hex wrench.



003673

### **Panorama plate with Quickfix I**

Code 003673

Dimensions 85x95x50 mm

Weight 415 g

### **Panorama plate with dovetail-track**

Code 003674

Dimensions 85x95x40 mm

Weight 335 g



003674

## System accessories for Linhof M 679cs and Linhof Techno

### Stitching slide for digital backs with live view for Linhof Techno and Linhof M 679cs

Code 002768-S

Accordingly new developments in the digital back market Linhof provides an extra short stitching slide (without groundglass), which now allows the benefits of stitching even when working in the live view mode. Integrated stops permit stitching: 2 shots enlarge the image size of digital chip backs (of 37x37 to 37x71 and of 37x49 to 49x71mm).



002768-S

### Groundglass adapter for 002768-S

Code 001690-S

For those users who also want the groundglass control, even when working with live view digital backs, a groundglass adapter for the new stitching slide (code 002768-S) is available. The adapter can hold all groundglasses of M 679cs and Techno System.



001690-S

### Groundglass scoring 43,9x32,9 mm with integrated Fresnel screen

Code 021849-S

Linhof offers a new groundglass scoring with format 43,9x32,9 mm.

This groundglass expands the Linhof range of quality groundglasses for digital photography, can be used with Linhof Techno and Linhof M 679cs. Linhof quality groundglasses are extremely fine-grained, have an integrated Fresnel screen and thereby offers a bright matte field.



021849-S



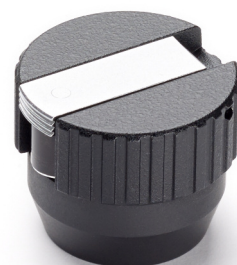
## System accessories for Linhof M 679cs and for Linhof 3D Micro

### Fast wind lever for rear standard at Linhof Techno and for 3D Micro

Code 002770

At the request of many customers Linhof now offers a fast wind lever for rear standard at Linhof Techno and also for Linhof 3D Micro. Larger shifts on the rear standard of Techno can now be realized faster. The fast wind lever can be carried also on the drive knob of 3D Micro.

The fast wind lever is set just on the drive knob of the rear standard at Techno or on the drive knob of 3D Micro.



002770

